



RACER BRIEF

2018 SCORE Baja 500

May 29 - June 3, 2018



5.28.18

1. General Information - All times Pacific Daylight Time (PDT)

1-1) **HYDRATION INFORMATION** - Possible high temperatures on some sections of this Baja 500 course will create the extreme need for adequate and continuous hydration for all competitors. Refer to **Section 6, Race Day Course Information**, on pages 4- 5, for additional hydration rules.

1-2) **COMPETITORS MEETING** - Will be held at **7:00 pm Friday, June 1**, at the Riviera Convention Center in Ensenada. All teams must have at least one banded competitor in attendance

1-3) **AIRCRAFT PILOT SAFETY MEETING** – **6:00pm Friday, June 1**, at Riviera Convention Center. **Pilot attendance is MANDATORY. Meeting conducted by Corporate Helicopters.**

1-4) **AIRCRAFT REGISTRATION REQUIRED** – If your team is utilizing a helicopter or fixed-wing aircraft, you must pre-register the aircraft with SCORE. Contact Mandy at **Corporate Helicopters 858-505-5650** to register aircraft. If aircraft is used for commercial filming or photography, it must be registered with SCORE as a media aircraft.

1-5) **CAUTION** - All competitors are reminded that off road racing is an inherently dangerous activity that can result in serious injury or even death. **YOU MUST BEAR THE ULTIMATE RESPONSIBILITY FOR YOUR OWN PERSONAL SAFETY.**

1-6) **CAUTION - SPECTATORS** - It is important to remember that SCORE cannot regulate the conduct of spectators. Be advised that spectators may engage in malicious activity by building ramps, digging ditches and placing objects on the course. Course marking signs may be altered or removed. **BE ALERT!!** Use extreme caution in crowded areas or when spectators are putting themselves in danger by standing too close to the course.

1-7) **CAUTION - HIGHWAYS AND ROADS** – Many roads used for this race course are used by the public. You must expect at all times to encounter traffic on the race course, especially oncoming traffic. **EXPECT THE UNEXPECTED AT ALL TIMES!! Check out the excellent article “What About You” in the Safety Guide section on our SCORE website... It certainly brings racing in Baja into your personal perspective!**

1-8) **ENVIRONMENT** - All competitors must do their part to protect and preserve the Baja ecological environment. Please instruct your team that it is mandatory and extremely important to properly dispose of all solid and liquid waste. **CAUTION – Do not leave flat tires along the racecourse or anywhere in the desert!** This is un-sportsman like and disrespectful of Baja and its gracious people. **TAKE YOUR FLAT TIRES AND LIQUID AND SOLID WASTE WITH YOU TO AVOID MAJOR PENALTIES IN THE FUTURE.**

1-9) **INSURANCE COVERAGE** – You **MUST** be listed on the official race entry and your entry **PAID IN FULL** before coverage will be in effect. Insurance is also available at a nominal fee for chase crews and team members. **Please review Section 13-2 on page 12** for Accident Medical Insurance, and for information regarding how to purchase insurance for your team members.

1-10) **WHAT TO DO IN CASE OF AN ACCIDENT WHILE PRE-RUNNING OR RACING IN MEXICO** - In case you or a crew member are involved in an accident while pre-running or during a race in Baja, Mexico, there are certain steps that must be followed. Please review these important steps that are outlined in **Section 14 on Page 14.**

1-11) **VERY IMPORTANT** – It is the responsibility of each competitor to read and thoroughly understand this Racer Brief, Penalty Document and SCORE Rule Book. These documents outline all information governing conduct of this event! Failure to comply with these rules can result in penalties, disqualification and/or loss of awards.

2. Race Registration Information

2-1) ON-LINE REGISTRATION

Online Registration is open through **8pm Wednesday, May 23rd**. Payment in full is required at this time. After this deadline, all Registration must be done in person at SCORE registration site in Riviera del Pacifico Center in Ensenada. Additional fees apply.

- Separate registrations are required for each driver/rider and co-driver or co-rider.
- Waivers must be signed by each of the above individuals.



2018 Baja 500 Racer Brief



2-2) **REGISTRATION HOURS** - Wednesday, May 30 Noon-8pm, Thursday, May 31 8am-5pm, and Friday, June 1, 8am-5 pm. No walk-in registrations accepted after 4pm Friday!

▶▶ **YOU MUST GO TO SCORE REGISTRATION BEFORE ENTERING TECH/CONTINGENCY LINE!**

▶ Registration will be in the Red Room at the Riviera del Pacifico Convention Center. All Drivers/Co/Drivers and Riders/Co-Riders are required to register and sign waiver forms. If there is no signed waiver from the DOR / ROR on file in registration, the entry will be withdrawn from the event.

▶ Be sure to bring your driver's license or photo ID with you to registration. You will be required to show ID prior to signing your waiver forms. If you currently have a timing transponder, you will be asked to enter the transponder number during the online registration process. Take a photo of the serial number so you will have the number available to verify in registration. Registration **cannot be completed** until your transponder number is verified.

2-3) **INFORMATION PACKET** - At registration, each competitor will receive an envelope containing valuable race information that **you must read and thoroughly understand!** Fill out Contingency form **before getting in line!** Failure to complete contingency form will void any contingency awards. **Form must stay with vehicle!** Tech Inspection forms will be provided in the technical inspection area.

2-4) **ADDING CO-DRIVERS/RIDERS** - Registered DRIVER or RIDER of RECORD MUST BE PRESENT to ADD Co-Drivers/Riders to Their Entry. DOR and ROR are only individuals who can add additional persons to their official entry.

2-5) **NO LATE REGISTRATION OR LATE TECH ON RACE DAY**

3. Tech Inspection and Contingency

3-1) **TRANSPONDER CHECKS** - Transponder check will be located near the start ramp on Lazaro Cardenas. All transponders must be checked and operation verified before proceeding further. Vehicle will receive a sticker indicating transponder has been checked. Vehicle will not be allowed to enter tech area without this sticker!

3-2) **CONTINGENCY AND TECHNICAL INSPECTION – TWO DAYS!** Hours are 9:00 am to 6:00 pm both days. Contingency is open each day until 5pm. Contingency/Tech line starts on Lazaro Cardenas north of start area.

Thursday, May 31 - Following classes are scheduled for Registration / Tech Inspection / Transponder Check and Stella Tracking Device Installation Contingency TODAY!

All Moto Classes	Class 7	Class 1700	Trophy Lite
All Quad Classes	Class 8	Heavy Metal	Class 3000
All UTV Classes	Class 1400	Pro Truck	Vintage '82 & Earlier
Class 3	Class 1500	Stock Full	Vintage '83-'92

Friday, June 1 - MANDATORY REGISTRATION for All 4-Wheel Classes NOT SCHEDULED for Thursday must Tech TODAY! This includes Contingency / Tech Inspection / Transponder Check and Stella Tracking Device Installation for all other 4-Wheel classes.

All classes including motos, quads and UTVs are required to travel the entire Tech/Contingency route and be available for event interviews. Transponder check must be complete before entering tech area. ▶▶ SCORE recommends all moto/quad classes arrive early to avoid possible long lines and delays.

You must have top section of Contingency form filled out BEFORE entering tech line! Form is in racer packet you receive at Registration! Vehicles with document information incomplete will not be eligible for any Contingency awards. No exceptions! - Contingency Form MUST REMAIN with vehicle in line.

3-3) **CHASSIS INSPECTIONS** - SCORE Chassis Inspection/Tagging will take place Tuesday, May 29, and Wednesday, May 30. from 9am to 5pm. **Location:** Playa Hermosa Beach, one mile south of start line. Contact Tech Director Dan Cornwell (619) 572.8245 for assistance or information.

3-4) **PRE-TECH / STELLA BRACKET CHECKS** – To speed tech inspection days on Thursday and Friday, SCORE will conduct **pre-tech inspections and Stella bracket installations and checks** in conjunction with chassis inspections on Tuesday and Wednesday, May 29 and 30. Vehicles that are pre-tech inspected will use the special "fast lane" on Tech Days to expedite final inspection.



2018 Baja 500 Racer Brief



3-5) STELLA DEVICE ASSISTANCE - Stella representatives will be at the Chassis Inspection location (above) during the chassis inspection hours. They will provide technical assistance and verification of mounting and wiring for your Stella installations. See Section 8 for more information on Stella III Devices. If you have not pre-paid for these Stella III bracket kits, **on-site payment must be cash only.**

3-6) CONTINGENCY DECLARATION – To be eligible for potential awards from SCORE contingency sponsors, you must complete the top portion of the Contingency Declaration Form before entering the contingency/tech line. In the **Sponsor Product** columns. Check the boxes at left of company listings for their products you are using on your vehicle. Contingency stickers for SCORE contingency sponsors will be available wherever possible. Be prepared to point out products you have checked to our contingency inspectors. Contingency sponsor **stickers must be on vehicle before entering the tech inspection area!**

3-7) NOTE: Failure to display SCORE stickers on vehicle disqualifies you from any payout from this event!

4. Pre-Running and Pre-Race Information - All times Pacific Daylight (PDT)

4-1) PRE-RUNNING - Course will be open for pre-running from **Rm 39.30 to Rm 503.17** beginning on **Saturday, May 19**. Pre-running outbound from start to **Rm 39.30** will only be allowed **beginning Thursday, May 31**. No inbound pre-running allowed at any time from Rm 503.17 to finish. Use caution at all times as many roads and trails are used for local traffic. Refer to Course Notes for detailed course information. **CAUTION! Be aware that vehicles may be moving slowly or stopped on the course!**

Please observe all speed limits during pre-running and be courteous to everyone you have contact with. **Remember... you are a guest in their country!**

4-2) TRANSPORTING RACE FUEL – Drums and dump cans containing fuel cannot legally be transported across the border into Mexico. Only fuel in the vehicle tanks is allowed. VP is the Official SCORE fuel supplier for 2018. You can possibly arrange for your fuel to be delivered in Ensenada or to other locations.

4-3) QUALIFYING – There is no qualifying for this event. Starting positions will be determined from results of the 2018 San Felipe 250. Start positions for entrants not participating at San Felipe will be determined by draw. Refer to SCORE in-Class Start Order for additional information.

5. Race Day Staging and Start - All times Pacific Daylight Time (PDT)

5-1) RACE DISTANCE AND TIME LIMIT - Total distance is **542.12 miles (847.43 km)** Time limit is **22 hours** from your scheduled start time in Ensenada. Minimum average speed to finish is **24.64 mph (39.65 kph)**.

5-2) START LINE - Located in front of Riviera Convention Center. All competitors will roll up on starting ramp for a possible interview on the podium prior to start. Post-race interviews will be conducted at same location after finishing.

5-3) STAGING & START for Motos & Quads – First bike out at **3:30am**. Staging will start at **3:00 am**. Starting interval for Pro Moto Unlimited - **One rider every minute**. All other classes **one rider every 30 seconds**. **STAGING will begin before START Ramp on Lazaro Cardenas in front Riviera Convention Center**. The starting order is shown below. All riders will start within their class based on In-Class Start Order Policy for entries received by 8:00 pm on Wednesday, May 23rd. Entries received after this draw deadline will start in the order the entry is received.

ABSOLUTELY NO FUELING IS ALLOWED IN THE STAGING AREA!

Moto and Quad Staging Times - You must be on time for staging and follow instructions from the staging staff.

STAGING TIMES - ALL MOTOS AND QUADS - BE ON TIME!

Class	Stage	Class	Stage	Class	Stage
1 Pro Moto Unltd	3:00a	5 Pro Moto 50	3:10a	9 Sportsman Quads	3:20a
2 Pro Moto Limited	3:00a	6 Pro Moto Ironman	3:10a	10 Sportsman Motos	3:20a
3 Pro Moto 30	3:00a	7 Pro Moto 60	3:10a		
4 Pro Moto 40	3:00a	8 Pro Quads	3:10a		

5-4) STARTING GAP - There will be an approximate 3-1/2-hour time gap between the last Sportsman M/C or Quad starter and the first SCORE Trophy Truck starter.



2018 Baja 500 Racer Brief



STAGING TIMES - ALL 4-WHEEL CLASSES - BE ON TIME!

5-5) STAGING & START for FOUR WHEELERS – First truck out at approximately 8:00am. Staging will begin before Start Line on Lazaro Cardenas. Vehicles will begin staging Saturday morning starting at 6:45 am for a 8:00 am start (time approximate). One TT every minute - One vehicle every 30 seconds for all other classes.

Vehicles start order within their respective class based on:

- 1) Finish position at 2018 San Felipe 250,
- 2) Draw #1 for racer results for 2018 San Felipe 250 entries that were DNF
- 3) Draw #2 for entries received by 8:00 pm on Wednesday, May 23rd. Entries received after this draw deadline will start in the order the entry is received.

Refer to SCORE In-Class Order Start section for Baja 500 on website.

<u>Class</u>	<u>Stage</u>	<u>Class</u>	<u>Stage</u>	<u>Class</u>	<u>Stage</u>
1 TTs & Legends	6:45a	15 Pro UTV FI	9:10a	29 Class 1700	9:25a
2 Class 1	7:15a	16 UTV NA	9:15a	30 Stock Mini	9:25a
3 TT Spec	8:00a	17 UTV Unlimited.	9:25a	31 Vintage 82 Earlier	9:30a
4 Class 10	8:00a	18 Class 5-1600	9:25a	32 Vintage 83-92	9:30a
5 Class 2	8:00a	19 Class 3000	9:25a	33 Class 9	9:30a
6 Hammer Trk Unl	8:00a	20 Trophy Lite	9:25a	34 Class 11	9:30a
7 Hammer Trk Ltd	8:45a	21 Baja-e	9:25a	35 1400 Spt Truck	9:35a
8 Class 8	8:50a	22 Baja Challenge	9:25a	36 1500 Spt Buggy	9:35a
9 Class 1/2-1600	8:50a	23 Class 3	9:25a	37 2000 Spt Ltd Trk	9:35a
10 SCORE Lites	8:50a	24 Pro Truck	9:25a	38 Sptsmn UTV	9:35a
11 Class 7	9:00a	25 Stock Full	9:25a	39 Spt Stock UTV FI	9:35a
12 Class 7F	9:00a	26 Class 7sx	9:25a	40 Spt Stock UTV NA	9:35a
13 Class 5	9:00a	27 Class 3700	9:25a		
14 Heavy Metal	9:00a	28 Class 2700	9:25a		

** Staging times may be revised based on class entry counts

IMPORTANT... It is critical that you stage at the times shown above!!!

5-6) LATE STARTERS - A competitor who is late for his assigned start time will start at the back of the class that is currently being interviewed on the ramp. The elapsed time of a late starter begins at their **DESIGNATED START TIME**, not the actual late start time. Late starters must follow SCORE official's directions for late start procedure to avoid penalty. If SCORE officials determine it is their procedures that caused start delays or last-minute adjustments to the start order, your time will be adjusted to when you are actually given the green flag. **Start Line will close 10 minutes after last competitor scheduled to start leaves start line.**

6. Race Day Course Information & Regulations - All times Pacific Daylight Time (PDT)

Special Course Shortcut - A section of the course has been eliminated for **all Sportsman and Vintage classes and Class 11 vehicles** to provide a better chance of finishing the Baja 500. The shortcut begins at Check #1 at Rm 174.20 and re-enters the main course at Rm 243.44. Shortcut distance on Hwy 3 is ± 8 miles and eliminates the 69.24 loop north of Hwy 3. Other classes may utilize this shortcut if all entrants in a class agree to request the shortcut. Contact Jose G. to place a request.

EXTREMELY IMPORTANT

Start and finish of this Baja 500 course is in the City of Ensenada. Although streets will be cordoned off, all racers must be extremely alert for possible crowds near the race course and possibly ignoring the barricades.

6-1) CRITICAL HYDRATION INFORMATION - Possible high temperatures on some sections of this Baja 500 course can create the increased need for adequate and continuous hydration for all competitors. Do not wait until race morning to start to hydrate! Experts recommend starting your personal hydration at least 48 hours before strenuous exercise! Believe us... this course will be strenuous!



2018 Baja 500 Racer Brief



6-2) SPECIAL Baja 500 REGULATION - Motos and Quads: In addition to SCORE Competition Regulation CR 9, all moto and quad competitors are required to utilize a hydration pack (CamelBak® or equivalent), if scheduled to ride in anticipated high heat sections of course. Minimum liquid capacity is one (1) liter, and two (2) liter size required if temperature is expected over 80° F (26.7° C)

6-2A) BAJA PITS will have a COMPLIMENTARY water station FOR ALL RACERS located at Rm 174. This free water service is courtesy of Carlos and the Baja Pits group.

6-3) DRIVER OR RIDER OF RECORD - Driver or Rider of Record must either start or finish the event to be eligible to receive start, placement and finish points. If a DOR/ROR does not start or finish the event, the entry will only be eligible for trophies and race payout. Refer to General Regulations GDC 2, GDC 3 and Points Policy for additional information.

6-4) RADIO FREQUENCY - SCORE will use **151.625** (Weatherman Relay) for the main race operations radio frequency. Please use this frequency to report an emergency, request assistance, report out of race status. Refer to Section 4-3 for guidelines on monitoring this frequency.

6-5) COURSE MARKINGS – The race course is marked with orange/white ribbon, orange signs/black arrows, green wrong way markers, and mile markers every **Five (5) miles**. Markings are not guaranteed to remain in place. All race teams are strongly advised to use the official GPS course file. Less than 1% of dangers are marked, and markings are there only to assist with controlled speed pre-running. Make your own course notes for race day.

6-6) HIGHWAYS ARE RESTRICTED AREAS - Pitting or performing any service of any kind is **not permitted** on any portion of any paved highway surface. **You will receive a minimum penalty of 1 hour**. The paved highway is considered a restricted area because use of the highways is subject to permission by the Mexican Federal Highway Police. Chase vehicle travel on the highway sections must be done in a safe and prudent manner. Passing on the highway section must be made on the left-hand side only and within the designated zone speed limit. All competitors must possess a valid driver license and passport or at least have a copy of it while racing or pre-running. This is in case you need an emergency international transport. All chase crews and team members should carry their passports as well.

6-7) SPEED ZONES / CHECKPOINTS - There are a total of 16 speed zones and four (4) full-stop physical checkpoints with 15 mph speed limit from 150 feet before to 100 feet after each checkpoint. All locations are marked on GPS file and there will be physical markings on course. Markings are not guaranteed to remain in place. All race teams are strongly advised to use the official GPS course file. Refer to the Penalty Bulletin for detailed information on all race and checkpoint speed zones for this event.

6-8) REAR FACING BLUE LIGHTS - NO NERFING - Classes 9, 11 and all Sportsman and Vintage classes are required to display a rear-facing blue light illuminated at all times. **NO NERFING is allowed at any time on these “blue light” vehicles.** Any reports of this violation will result in time and/or other penalties! **NOTE:** All vehicles must have amber light illuminated at all times during entire event.

IMPORTANT - Race vehicles competing in any other classes are not allowed to use the blue light. Light must be removed or disconnected for entire event. No exceptions!

6-9) COURSE COMPLIANCE - Mandatory Stella III devices will be used to identify course deviations. Washes are open only to the banks on either side and major silt beds are open. Short coursing is not allowed. Do not deviate from the main course even a little bit when you are near ranches, spectators or farm fields. The GPS course is the official course. It is essential to race using the official GPS course file and check for updates on the SCORE website.

REMEMBER... Width of race course is limited to 60 feet (18.28 m) either side of center of course. If you deviate outside these course limits, you are not covered by SCORE insurance!

6-10) HIGHWAY CROSSINGS – Some Full Stop Checkpoints may be located at highway crossings. There is a **15 mph speed limit** 300' before the stop and 100' past the stop at all checkpoints. Clearly mark all road crossings on your GPS files for reference. You must be aware of all approaching road crossings. **IMPORTANT: Be extremely cautious of cross traffic when crossing the highway.**

6-11) PASSING – MOTOS AND QUADS – If you are barely averaging the minimum speed of 24.64 mph, you must be prepared to be passed by the lead truck or buggy **as early as race mile 169 at approximately 11:04 am , and possibly even sooner!**



2018 Baja 500 Racer Brief



6-11) *continued* - Four-Wheel Vehicles that are in a position to pass a Motorcycle or Quad **MUST SIGNAL WITH STELLA DEVICE AND NOT ATTEMPT TO PASS UNTIL THE RIDER HAS MOVED TO THE SIDE OF THE COURSE. RIDERS MUST REMAIN AWARE OF APPROACHING TRAFFIC AND MOVE OVER AS QUICKLY AS POSSIBLE.**

Riders, if you are caught by the first 4-wheel vehicle you must remain super vigilant and get off the course BEFORE you are caught by the next vehicle. Riders must pull off the course to a safe distance and wait for dust to clear before re-entering the race. Riders, if you try to outrun to avoid being passed by a driver you will receive a DQ.

Riders, get off the course early, if you wait for the four-wheel vehicle to pull right up on you at night before pulling off the course you will be a DQ. Drivers, if you should have trouble passing, be sure you get the correct number of the rider. Moto and quad riders, never race in the dust of a four-wheel vehicle, you are putting yourself in "extreme" danger.

If you are passed by a vehicle and you are still on course you are riding in the dust. Riders, if you are riding slow and you have been caught by the four-wheel vehicles you are in "extreme" danger and must bear full responsibility for your own safety.

6-12) PASSING - TRUCKS AND CARS - Drivers: If you are tapped by a competitor move over... blocking traffic is un-sportsmanlike and you may be nerfed or penalized. Refer to Section 6-8 (above) for restrictions on nerfing certain "blue-light" classes.

6-13) LATE ARRIVAL AT CHECKPOINT - MOTOS AND QUADS - If you arrive at a checkpoint after the designated closing time for that checkpoint location, you will be flagged off the course and not allowed to continue. Your race is over! Failure to leave course as directed will result in disqualification (DQ). See Section 7-5 for closing times.

6-14) VIRTUAL CHECKPOINTS - The race course has approximately **124 Virtual Checkpoints (VCPs)**. The VCPs are strategically placed to discourage short coursing. The entire course will be reviewed for compliance. The standard penalty for **failure to clear a VCP within 120 feet is 10 minutes**. In order to avoid confusion regarding the locations of the VCPs, it is essential to race using the official GPS course file and check for updates on the SCORE website. Review Penalty Bulletin for additional VCP information and penalties. **NOTE: MVCP 121 must be cleared within 40 feet!**

6-15) CHASING – Always drive safely. Unsafe passing or dropping a tire off the road is the cause of most fatalities on Mexican Highways. You should be 100% prepared the day before the race. Expect the unexpected. Leave early and expect to be late to your destination. Make sure each chase vehicle has copies of insurance for all of your other chase vehicles. Carry the largest fire extinguishers you can and have a good medic bag in each chase. Keep your passport and driver license with you. Have a list of cell phone numbers, SAT phone numbers and radio frequencies for your team and other teams. **Turn off your off-road lights when on highways!**

ABSOLUTELY NO CHASING OR LEADING RACE VEHICLES ON COURSE. Going backwards on course will get your team a DQ. If you are speeding on the highway in a chase vehicle, you are endangering yourself and those with you. If you are in a chase vehicle that is being driven in a dangerous manner, tell the driver you are uncomfortable, and if that does not work, report it to your team manager. If dangerous chase team actions are reported to SCORE, the competitor that team is associated with may be penalized or disqualified from event.

CAUTION: Highways are patrolled by the Mexican Federal Highway Police. Speed limit on paved highways varies by speed zone. Refer to Penalty Bulletin for list of speeds for each zone. There are lower speed limits in many towns and villages. Speed Zones and speed limits are listed in Penalty Bulletin. You MUST observe all speed limits!

6-16) TEAM PITS - All pits must be located on **right side of pavement ONLY... NO EXCEPTIONS!** Never pit within 50 feet of the course; give yourself extra room for safety. Do not pit on the outside of a turn or within 250 feet of the exit of a turn. Pitting is not permitted within 300 feet before and 100 feet after a checkpoint. Use common sense and keep your team members safe!

6-17) PIT REFUELING - Fire is always a danger during refueling. All fueling personnel should wear adequate protective clothing gear, and persons should be assigned to the specific function of manning multiple fire extinguishers in the immediate refueling area during each stop. A minimum of three (3) 20 lb. ABC rated fire extinguishers should be in each pit and ready for use at all times. Grounding the race vehicle during the refueling stop is a must. **All personnel using pressure and elevated tank fueling systems are required to wear helmets, face shields and flame-resistant clothing during refueling operations.**

6-18) PIT SUPPORT ORGANIZATIONS – Several professional pit support organizations will offer expert pit services to race teams for the Baja 500. Refer to PIT SUPPORT listing under the Race Info/Baja 500 race logo for information on each of these experienced pit support groups.



2018 Baja 500 Racer Brief



6-19) TOWING RULE - No race vehicle shall be towed, pushed, pulled or transported by another vehicle further than 1% of the total distance of the race course 5.42 miles or within 1/4 mile of the Finish Line. However, banded race vehicle occupants are permitted to push a disabled race vehicle across the finish Line. At **NO TIME** may any participant or chase team go backwards on the course. This will result in a DQ for your team!

6-20) TIME ON COURSE – DRIVERS and RIDERS will have **22 Hours** from their designated start time to complete this **542.12 mile (872.43 km)** Baja 500 racecourse. Minimum average speed of **24.64 mph (39.65 kph)** required to finish.

6-21) OFFICIAL TIMING FINISH and FINISH LINE STOP – The official finish timing loop is located before the ramp in front of the Convention Center. Be prepared to make a complete stop immediately after the timing arch and before reaching ramp. This stop must be made in a safe and controlled manner. There are cones leading into the timing loop; if you hit one you will be penalized one (1) minute for each cone. You also will be fined if you hit the timing loop.

6-22) REPORTING STATUS IF YOU DROP OUT OF RACE – If your vehicle becomes disabled anywhere on the course, and you cannot proceed further in the race; it is **IMPERATIVE** that you report your situation and position to the Weatherman at Race Control. We don't want to spend hours looking for you on the course when you have packed up and are on the way home. Please be considerate for all the personnel that are working very long hours to stage this event!

6-23) DISABLED VEHICLES - It is each competitors responsibility to retrieve their vehicle if it becomes disabled anywhere on the course during the event. This possibility should be addressed during pre-race planning with your team.

6-24) SCORE MEDICAL HELICOPTER - SCORE's medical helicopter is totally committed to supporting life-threatening emergencies. Use for any other purpose will take away the helicopter support needed for an emergency. If the SCORE medical helicopter is requested for any non-emergency purpose, you can be endangering someone's life. Deploying the medical helicopter for any non-life threatening service will be billed to the Driver or Rider of Record at the rate of \$1900 per hour, and total time billed will include re-fueling time. SCORE recommends all team members are trained on the proper radio procedures and use of the Stella III to request life-threatening medical assistance vs. non-life-threatening services.

6-25) SPECTATOR INJURY OR PROPERTY DAMAGE - Race competitors engaging in intentional and/or direct physical contact with a spectator or spectator's property may incur penalties at the discretion of the Race Director. If the Race Director determines the contact was accidental, he may elect to not issue penalties. No penalty will be assessed if spectator property is placed or thrown in front of race vehicle or is the property of the offending race team.

All allegations of wrong doing must be submitted within one (1) hour after the last scheduled finisher in the class the offending vehicle is entered in and must be supported by video evidence. Refer to 2018 Baja 500 Penalty Bulletin for specific penalties based on each specific situation.

7. Checkpoints - All times Pacific Daylight (PDT)

7-1) NUMBER OF CHECKPOINTS - There are **four (4) full stop** checkpoints for the SCORE Baja 500. Mileage locations are in Section 7-5 below.

7-2) FULL-STOP PHYSICAL CHECKPOINT RULES – Checkpoints may be located at paved road crossings. You are required to enter the coned area at each Physical Full-Stop Checkpoint at 15 mph in single file manner and come to a **COMPLETE STOP** at the stop sign. The checkpoint corridor is not considered part of the race course. Entering and exiting all checkpoints must be done in a safe and prudent manner in order to guarantee the safety of all checkpoint workers. Passing is not permitted 300 feet before a checkpoint. **Not coming to a full stop or exceeding the 15 mph speed limit for 150' before and 100' after the checkpoint will result in a sever time penalty! Refer to Baja 500 Penalty Bulletin for additional information.**

7-3) HELMETS, HNR DEVICES, SAFETY HARNESS AND WINDOW NETS - All helmets, HNR devices, seat belts and safety nets for all vehicle occupants must remain **SECURELY FASTENED** in place any time vehicle is in motion.

▶ **Missing a full-stop physical checkpoint will result in a one (1) hour penalty for each checkpoint missed!** ◀

7-4) OFF-ROAD LIGHT OPERATION - At no time must off-road lights be illuminated when there is oncoming traffic. All front facing off-road lights and light bars must be turned off when vehicle is being operated on any section of race course that is on a paved highway or public road. Only two (2) small lights suitable for normal highway driving can be in operation on these highways and roads. Motos and quads require only one (1) light. These highway lights must be connected and operated by a separate auxiliary switch. All front facing off-road lights and light bars must also be turned off when in the 15 mph checkpoint zones. This regulation applies to all trucks, cars, UTVs, motos and quads, and also includes all team and chase vehicles. Violations by any of the above vehicle categories are subject to penalties or possible disqualification from event.



2018 Baja 500 Racer Brief



7-5) CHECKPOINT CLOSING TIMES - Times shown are **APPROXIMATE** based on projected number of entries. – **Any revised closing times** will be announced at 7:00 pm Driver/Rider Meeting on Friday, June 1, if there are significant changes.

Checkpoint Number & Mileage	CP to CP Miles	CP to CP Km	Total GPS Miles	Total GPS Km	Bike/Quad Projected CP Close Time	Truck/Car Projected CP Close Time
Start in Ensenada	0.00	0.00	0.00	0.00	n/a	n/a
Check 1	174.20	280.34	174.20	280.34	12:16p ♦	6:34p ♦
Check 2	86.52	139.24	260.72	419.58	2:47p	9:05p
Check 3	107.43	172.89	368.15	592.46	7:08p	1:26a Sun
Check 4	98.68	158.81	466.83	751.27	11:09p	5:27a Sun
Finish in Ensenada	75.29	121.16	542.12	872.43	2:12a Sun	8:30a Sun

♦ One hour extra added to Check 1 Close Times

DRIVERS and RIDERS must average a minimum of **24.64 mph (39.65 kph)** and will have **22 hours** to finish.

7-6) CHECKPOINT CLOSING TIMES FOR TRUCKS AND CARS - IMPORTANT – If you experience a race stoppage such as a log jam on the course that is beyond your control, or have problems and are running late, and the checkpoints in front of you have closed, you can continue on using extreme caution, as if you were pre-running. Watch for local traffic that may think all race vehicles have passed and do not expect competitors running late! Report any race stoppage to Race Director immediately via **the Weatherman at 151.625**. If you have no communications, report it at your next pit or next checkpoint and have them relay the information.

7-7) CHECKPOINT CLOSING TIMES FOR ALL MOTOS AND QUADS - You must arrive at each checkpoint before closing time. If you are late **AT ANY CHECKPOINT**, you will be stopped and removed from the course. Failure to stop as directed will result in disqualification and no points. Refer to Baja 500 penalty bulletin for more information.

8. Stella Device and Transponders

8-1) Stella III SYSTEM - SCORE will again be using the Stella III system at the Baja 500. Use your existing bracket from previous SCORE events, or order Stella Installation Kit for this race.

8-2) To learn about the Stella III system and its operation, SCORE has provided informational videos and assembly information in both English and Spanish. *These videos and documents can be found on the SCORE website, Race Info page and select SCORE Tracking.*

STELLA Video - SCORE highly recommends that in addition to DORs/Co-Drivers and Riders/Co-riders, all team members and friends attending the Baja 500 view the video and learn how to operate the device in the event they are at the scene of an emergency.

8-3) Stella III Device - This device is mandatory and leased from Anube on a per race agreement. The Stella III will require a race team representative to sign the terms and conditions lease contract for the Stella III recording device at registration or during pre-tech inspection. You must be certain the Stella device is returned at the end of the event at the finish line. See additional information in Section 8-1. **Tampering with or covering these devices in any manner will result in an automatic disqualification (DQ).**

8-4) Damaged Stella Device - If your Stella tracking device is physically damaged during the event, it must be replaced at the next checkpoint. Failure to stop for a replacement unit will result in a 15-minute penalty for each checkpoint where you fail to stop.

8-5) Stella Tracker Not Transmitting - If your Stella tracking device is reported to no longer be transmitting a tracking signal, and is not physically damaged, you will be signaled to **STOP** at the next checkpoint and your device will be replaced. A time credit will be given for time required to replace the Stella device.

If you do not **STOP** when signaled to do so, you will be assessed a 15-minute penalty for each checkpoint where you fail to **STOP**.

If you are signaled to **STOP** at a checkpoint and it is determined the unit failed to transmit tracking data as a result of physical damage or tampering, and you failed to stop on your own, a 15-minute penalty for each checkpoint you have passed without stopping will be assessed.

Additional penalties may apply at the discretion of the SCORE Race Director.



2018 Baja 500 Racer Brief



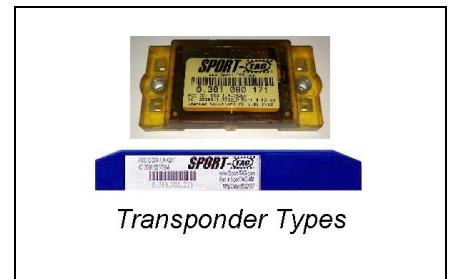
8-6) RETURNING STELLA III DEVICES - Participants *finishing the race in the allotted time must make sure that the tracking devices are turned into Stella personnel immediately after crossing the finish line.* Failure to turn in the equipment will result in your entry being assigned a DNF and you will not receive placement or finish points. All competitors that DNF must return the tracking recorders to Stella Tracking located at the finish line. If you are not returning through Ensenada, you must ship devices directly to Anube.

8-7) Stella BRACKET KIT – Bracket Installation Kit is a one-time purchase direct from Anube. Kit includes mounting bracket and hardware to permanently mount in your vehicle. Detailed instructions are included with each kit. We suggest leaving brackets installed on your vehicle to be ready for your next SCORE race.

8-8) SCORE SPORT TAG TIMING TRANSPONDER - Transponders are **REQUIRED** and are for precise timing of all vehicles in the event. Your transponder number will be verified at race registration and you must bring the number with you or take a photo of the serial numbers on the side of the transponder so you can confirm it quickly at registration. Your race **entry will not be considered complete** until the transponder number is verified. Transponders are purchased by the team, not leased. You do not return the Sport Tag transponder at the end of the race.

IMPORTANT: THE NUMBER ON THE TRANSPONDER MOUNTED ON YOUR VEHICLE MUST MATCH THE NUMBER THAT IS VERIFIED IN REGISTRATION if you want to be scored accurately! **THIS IS A MUST!**

The Sport Tag transponder is either blue, black or brown in color as shown at right. They can be purchased through Registration while completing your online registration, or on-site at race registration. If you purchase through Registration, you will pick up your transponder in registration at the race. The transponders are good for approximately 3 years of racing. These timing transponders are used in several other race series so you may already have one. If you already own one, be sure to include the serial number (transponder number) when completing your on-line race registration. You **MUST** enter your transponder number in your online or on-site registration so race timing records can be ready before race start.



NOTE: You **MUST** have the correct transponder mounted on your vehicle prior to entering the contingency/tech line. Stop at the timing loop located on tech/contingency row for your transponder verification check. You will then proceed on after your transponder reading is verified by SCORE timing personnel.

8-9) PERSONAL TRACKING DEVICES - It is **HIGHLY RECOMMENDED** that all riders and drivers have a personal tracking device that is in the vehicle or worn on their person and within reach **AT ALL TIMES**. This will benefit your pit and chase personnel tracking your location during the race. **Your personal tracker should also be used during pre-running.** Set your tracker to your personal emergency contact.

9. Race and Radio Communications

9-1) RADIO FREQUENCY - SCORE will use **151.625** (Weatherman Relay) for the main race operations radio frequency. Please use this frequency to report an emergency, request assistance, and report out of race status.

PLEASE do not ask for status reports repeatedly every few minutes!

9-2) WISE WORDS FROM THE WEATHERMAN GROUP - Expect the Unexpected AT ALL TIMES! Communications in remote areas are a challenge for everyone involved in racing. Weatherman Channel **151.625** is universally recognized as the “Voice of Baja Racing”, but even this operation has terrestrial limitations and there are remote areas where there will be **absolutely no VHF communications**. You must remember there will be times on the course where VHF communication may simply be unavailable. It is imperative that you understand that in remote areas first responders and help can be a very long way off and it is your responsibility keep these situations in mind during the race!

Be Race Smart - Be Safe - Have a Backup Plan in Place!!

NOTE: When you are unable to contact SCORE relay you will be on your own for communications. Please plan accordingly. The Weatherman Relay Team strongly suggests that every competitor have secondary satellite-based communications and a list of Emergency numbers to call.

SCORE, the Weatherman Relay Team, and PCI Race Radios will be coordinating race communications. We will try to answer instant messages, but sometimes they move too fast and we get too busy for status when the channel is Code Red. If you are worried about a competitor or need other information, please email **Weatherman@pciraceradios.com** or in Spanish **Weathermex@pciraceradios.com**.

On next page is a list of numbers to call if you have an Emergency and do not have clear communications to the Weatherman Relay Team. These numbers are for **EMERGENCY ONLY - NOT FOR STATUS REQUESTS!**



2018 Baja 500 Racer Brief



Cruz Roja Numbers	00-52-1-686-201-8880	Weatherman Direct Line 562-279-0700
From US Cell in Mexico	00-52-1-686-240-1630	SCORE Race Dir. 011-52-1-646-162-7336
From Satellite Phone	00-52-1-686-240-1630	
From US Cell in US	011-52-1-686-240-1630	

9-3) WEATHERMAN CHANNEL ETIQUETTE - If you are listening to Weatherman on **151.625**, please unplug your mic. If you feel it must be plugged in, be sure it is in a proper microphone hanger. There is nothing worse than a stuck mic during an emergency; someone's life or race can be at stake. Radio checks should be done before the race. When you turn on Weatherman channel, wait and listen before you speak...there may be an emergency going on that you would be interrupting. The Weatherman can hear what you cannot hear. Just because you do not hear anything does not mean there is not a life and death situation going on 200 miles from where you are. **Monitor this channel a sufficient amount of time to know you are not 'walking' on someone else's emergency.**

9-4) REPORTING STATUS IF YOU DROP OUT OF RACE – If your vehicle becomes disabled anywhere on the course, and you cannot proceed further in the race; it is **IMPERATIVE** that you report your situation and position to the Weatherman at Race Control. We don't want to spend hours looking for you on the course when you have packed up and are on the way home. Please be considerate for all the personnel that are working very long hours to stage this event!

10. Post-Race Requirements

10-1) RETURNING STELLA III DEVICES - Participants **finishing the race in the allotted time must make sure that the tracking devices are turned into Stella personnel immediately after crossing the finish line.** Failure to turn in the equipment will result in your entry being assigned a DNF and you will not receive placement or finish points. All competitors that DNF must return the tracking recorders to Stella Tracking located at the finish line. If you did not **RETURN THROUGH** Ensenada, you must ship devices directly to Anube. Deadline to return devices is **Monday, June 11, 2018.** If units are not received at Anube by this deadline, you will be charged for full retail price of the unit! **Shipping instructions are on the Anube Lease Agreement Form you signed to lease the Stella III device for the Baja 500.**

10-2) SCORING – Driver or Rider of Record who is designated in the official results as a finisher must either start or finish the event to be eligible to receive start, placement and finish points. A DOR/ROR designated as a non-finisher (DNF) will receive starting points only, and a DOR/ROR who is disqualified will receive zero points for this event.

10-3) PROTESTS – To protest another competitor, you, or one of your authorized crew members, must submit a detailed written protest to SCORE. The written protest **must be filed within one (1) hour** after the last scheduled finish of the final competitor in your class. The written protest must be delivered to Race Director Abelardo Grijalva. SCORE will consult with the Competition Review Board, and the matter will be heard as soon as practical. Contact the Cruz Roja Command Center, SCORE Timing trailer or Abelardo (Jose) Grijalva to request protest forms.

To file a technical protest, you must present a written protest within 30 minutes after the last scheduled finish of the final competitor in your class and submit a **\$500 cash fee** to SCORE Technical Director Dan Cornwell. Contact the Cruz Roja Command Center, SCORE Timing trailer or Abelardo (Jose) Grijalva to request protest forms.

10-4) REQUEST FOR "GOOD SAMARITAN" TIME CREDIT - If you stop to assist another racer who is in need of **immediate medical assistance**, or possibly a life or death situation, you may be eligible for a time credit for the time you are stopped. The **written request** for time credit must be delivered by you, or a member of your team, to either Race Director Jose A. Grijalva, **within one (1) hour** after the finish of your class. Forms are available from Cruz Roja Command Center, SCORE Timing Trailer, Race Director Jose Grijalva. Request must include vehicle number of competitor you assisted, race mile, time stopped and re-started and description of assistance given.

10-5) UNOFFICIAL & OFFICIAL RESULTS – Unofficial finishers will be posted in the media area periodically during the race. Official finishers will be posted one hour before the awards ceremony on Sunday, June 3rd.

10-6) AWARDS CEREMONY - Will be held on **Sun. June 3 at 12:00 noon PST at the Interview Ramp in front of the Riviera del Pacifico Cultural Center.** You must arrange to have your trophy accepted by someone else if you are not going to attend. No trophies can be brought back across the U.S. border by SCORE International.



2018 Baja 500 Racer Brief



11. Media Coverage of the Baja 500

11-1) LIVE VEHICLE TRACKING – Available at www.score-international.com during the race.

11-2) NATIONAL TV SHOW – Be sure to have in-car cameras and if possible one with intercom audio. Optimal location is one facing forward from behind the driver with intercom audio, a second camera also facing forward and a third camera facing back. Put your team name, # and sponsors stickers within view of the camera shots. Put the in-car cameras within reach of co-driver for cleaning. At the finish line, there will be SCORE techs downloading camera cards. It takes about 60 minutes to download. Your cards will be returned with footage intact on them. Helicopters will also be shooting the race for broadcasts on El Rey Network, and the broadcasts will play worldwide.

12. SCORE Contacts:

Jose A. Grijalva	Race Director	(646) 162-7336 (Baja) (646) 189-7087 (Baja)	race-director@score-international.com Jose G. - Alternate number
Marco Arturo Durazo	Admin./Legal Advisor	(646) 121-8256 (Baja)	madurazo@hotmail.com
Roger Norman	President	(775) 690-2305	roger@score-international.com
Elise Norman	Vice Pres.	(664) 698-8306 (Baja)	elise@score-international.com
Juan Tintos	SCORE Advisor	(664) 171-6622 (Baja)	jbtintos@hotmail.com
Dan Cornwell	Tech Director	(619) 572-8245	tech@score-international.com
Audi Cuarez	Registration	(775) 852-8907	registration@score-international.com
Michelle Ou	Registration	(775) 453-4971	acct.miracle@gmail.com
Hector L. Ponce	Course Personnel	(646) 203-2470 (Baja)	hlpr92@hotmail.com
Jim Ryan	Marketing	(714) 330-3521	jim@score-international.com
Christine Wait	Points	(702) 407-3059	christine@score-international.com
Lawton Shank	Contingency	(702) 351-6666	lawton@score-international.com
Kim Carpenter	Radio	(760) 475-0409	kim764@yahoo.com
SCORE Ops (Cruz Roja)	EMERGENCY	(686) 240-1630 (Baja)	rlozoya@cruzrojaestatalbc.org
Scott Steinberger	"Weatherman Relay"	(714) 673-7277	scott@pciraceradios.com

If calling (Baja) phone numbers from U.S. you must first dial 011-52-1 before Baja numbers listed above

IMPORTANT - SCORE Insurance Coverage:

13. SCORE Insurance Coverage:

13-1) INBURSA SEGUROS CIVIL LIABILITY INSURANCE – Following are Terms and Conditions of Civil Liability for participants in the 2018 SCORE Baja 500 Off-Road Race.

Notice to all SCORE participants

Basic terms & conditions of Civil Liability - 2018 SCORE Baja 500

Civil Liability: \$ 900,000 USDlls maximum for the event. Bail Bonding Service

Coverage starts the opening day of pre-running for the event. Your entry fee MUST Be "Paid In Full" to activate the insurance coverage.

Coverage stops when the insured vehicle either finishes the event, is disqualified, is "declared out of the event" for any reason, or when the event vehicle time has been stopped, or when the time limit on the event has expired.

Coverage is only in force while the event vehicle is on the official course of the event, and only while participating or pre-running the event, and at no other time.

The Insured is covered only when driving or riding in their assigned event vehicle or their pre-running vehicle.

The Insured must be a registered driver or a registered co-driver for the event that is being insured, with all drivers having paid their entry fee in full.

Any accident, damages, or injuries must be reported to the promoter of the event, or the insurance representative during the timeframe of the event.

The bonding service coverage is provided during the day and timeframe of the race only, and at no other time.

Bonding service is provided as a result of a covered bodily injury accident only.



2018 Baja 500 Racer Brief



The Bonding Coverage provides for a professional legal bonding service that would be required in the event of judicial proceedings filed in the Mexican Republic against a participant as the result of a covered bodily injury accident.

The bonded participant is required to cooperate and keep the bond in effect by attending any and all legal or court proceedings in Mexico, in connection with the accident that took place during the race in Mexico. Failure by the bonded participant to cooperate and keep the bond in effect would result in legal actions against the bonded participant. The legal actions would include, but not be limited to, cost of the bond, cost of the issuance of the bond, court cost and the issuance of a warrant for their arrest.

Coverage excludes:

- Any injuries when drivers or co-drivers are not in/on their event vehicle.
- Any damages that occur in a pit area or while pitting.
- Any damages or injuries incurred when the event vehicle is outside of the official course of the event, or in violation of any traffic laws while on any highway section of the event. Official Insured Course is defined as 60 feet (18.3 meters) from centerline to either side of course.
- Any pre-existing medical conditions of the insured.
- Conditions that are not caused by a covered accident.
- Damages to the insured event vehicle, and any other event vehicles.
- Any participant found to be under the influence of drugs or alcohol.
- Any participant "under" the age of 16 at the time of the event.
- Any bonding service as a result of property damage
- Any bonding service during pre-running or practicing.
- Any bonding service for a participant without a valid driver's license.

Insurance Policy issued by **Inbursa Compania de Seguros**

When calling regarding an accident mention that you are a participant of the SCORE Baja 500 race.

ACCIDENT MEDICAL INSURANCE INFORMATION

13-2) BERKLEY ACCIDENT MEDICAL INSURANCE – Outline of Accident Medical Insurance for 2018 SCORE Baja 500 participants. Coverage starts the opening day of pre-running for the event. Your entry fee **MUST** Be "Paid In Full" to activate the insurance coverage and all co-drivers/co-riders must be listed on your entry to be covered during pre-running. Additional co-driver and co-riders can be added at registration but will only be covered by the insurance after your entry is updated in registration:

Eligible Participant:

Registered & Banded Drivers, Co-driver & Riders.

Accident coverage for up to six (6) eligible participants is provided as part of the entry fee. This coverage is activated when entry is paid in full. Coverage for additional participants (seven (7) or more persons) is available for purchase. Contact SCORE registration for additional information.

Chase/Media and Team Member Coverage:

Coverage for team members and media can be purchased for an additional \$50.00 per person. This insurance can be purchased by going to Score.mycustomevent.com This team coverage is activated when your entry is paid in full and the additional coverage purchased is paid in full. Media coverage begins when credentials are approved and fees paid.

Covered Activity:

While participating in the sponsored and supervised activities of the policyholder, starting the opening day of pre-running. Coverage included while engaging sanctioned off-road racing event on an approved and/or sanctioned course. Practice away from sanctioned course is not included, and coverage concludes on the final day of racing.



2018 Baja 500 Racer Brief



Benefits:

\$ 20,000 Maximum Accident Medical Benefits
\$ 1,000 Deductible (Payable at time of service)

Benefits Include:

Accidental Death and Dismemberment maximum benefit \$10,000
Dental \$250 per tooth
Accidental Burn and Disfigure
Coma Benefit
Bereavement & Trauma Counseling Benefit
Emergency Medical Evacuation \$25,000
Repatriation Benefit \$25,000

Exclusions:

Intentional self-inflicted injury
Suicide or attempted suicide
War or act of war, whether declared or not
Sickness or disease
Aircraft
Injury or loss while being legally intoxicated
Injury or loss attributed to the use of drug/narcotics
Injury covered by occupational benefits
Participation in activity not specifically covered by policy
Conditions that are not caused by covered accident
Any treatment, service or supply not covered by policy
Commission of, or attempt to, commit a felony

Request Claim Forms:

Jose A. Grijalva	(646) 162-7336 (<i>Baja</i>)	race-director@score-international.com
Juan Tintos,	(664) 171-6622 (<i>Baja</i>)	jbtintos@hotmail.com
Marco Arturo Durazo	(646) 121-8256 (<i>Baja</i>)	madurazo@hotmail.com
Jacky Rocha	(646) 127-9997 (<i>Baja</i>)	jackyens@yahoo.com
Ensenada Office	(646) 120-5635 (<i>Baja</i>)	

If calling (*Baja*) phone numbers from U.S. you must first dial 011-52-1 before Baja numbers listed above

Claims Filing Deadlines:

Written notice of claim must be given to SCORE International S.R.L, LLC within 10 days after an insured's loss, All claim forms, supporting documentation, and initial expenses must be submitted within 60 days of the insured's loss.

Insuring Company:

Berkley Accident & Health

Servicing Hospitals:

SAN DIEGO - UCSD Medical Center, 200 W Arbor Dr., San Diego, CA - Tel. **858-657-7000**
ENSENADA - Hospital Velmar, De las Dunas 151, Ensenada BC - Tel. **646-173-4500**
TIJUANA - Hospital Angeles, Av, Paseo de los Heroes 10999, Zona Rio, Tijuana - Tel. **664-608-6700**
TIJUANA - Cruz Roja Tijuana, Alfonso Gamboa esq, Enrique Silvestre s/n Tel. **664-608-6700**
SAN FELIPE - Baja Medical Center, Carretera Federal #5 San Felipe B.C. Tel. **686-576-0200**
MEXICALI - Hospital Almater, Av. Fco. I Madero 1060, Mexicali B.C. Tel. **686-523-8000**



2018 Baja 500 Racer Brief



The insurance coverage information outlined above is a brief description of the accident insurance eligibility and benefits offered but it does not list all of the policy terms, conditions, coverage's, exclusions, limitations and definitions that apply to the policy contract. The actual policy governs all situations.

14. What to do in Case of an Accident While Pre-Running or Racing in Mexico

When calling regarding an accident specify that you are a participant of the SCORE Baja 500 race. In case you or a crew member are involved in an accident while pre-running or during a race in Baja, Mexico, you must know and follow these steps.

14-1). Always carry your valid Driver's License, Passport, Vehicle Registration and Proof of Current Insurance Policy valid for Mexico with you at all times.

14-2). If the accident occurs **DURING PRE-RUNNING**, and you are covered by the SCORE insurance, contact the insurance company immediately at one of the phone numbers listed below. Have clear information of where the accident happened including Race Mile, Kilometer marker, date and time, full details of what happened, if there are injuries or fatalities, and if you should require an ambulance or rescue to be dispatched to the scene of the accident.

INBURSA SEGUROS Main Telephone 01-800-911-9000 Alternate Contacts:
Enrique Melero Marin 011-52-1-646-947-8631 or Aaron Rojas Vergara 011-52-1-646-117-4233

14-3). If the accident occurs **DURING RACE WEEKEND**, contact the Weatherman using channel **151.625** and report the accident immediately as soon as it happened. Always have clear information of where the accident happened, including Race Mile, Kilometer marker, date and time, full details of what happened, if there are injuries or fatalities, and if you should require an ambulance or rescue to be dispatched to the scene of the accident.

If you are not able to contact the Weatherman and there are injuries or fatalities, contact the insurance company at one of the above numbers.

14-4). Do not leave the scene of the accident and especially if there are injuries or fatalities; it is against Mexican laws. Leaving the scene of the accident will only make things worse.

14-5). Get the support of the Insurance Company adjustor as they will assist you with Legal advice and proper representation. It is imperative that this is done immediately after the accident. Complete accident report must be filled out as soon as you finish the event but it should be reported immediately!

SCORE 2018 50th Annual Baja 500 Sponsors

